



*Total Solution Provider in Saw Device*

---

# SL06221AT

62.5 MHz IF SAW Filter  
21.3 MHz Bandwidth  
Revision 0: 9. May. 2008



- Electrical Characteristics
  - Package Dimensions
  - Testing Environment
  - Frequency Characteristics
- 

**SAWNICS Inc.**

---

460 Cheonheung-ri, Seonggeo-eup, Cheonan-si, Chungcheongnam-do, 330-836 / Korea.  
Tel: +82 41 550 9372 / Fax: +82 41 550 9399 / [www.sawnics.com](http://www.sawnics.com)

## □ Electrical Characteristics

### Maximum Ratings

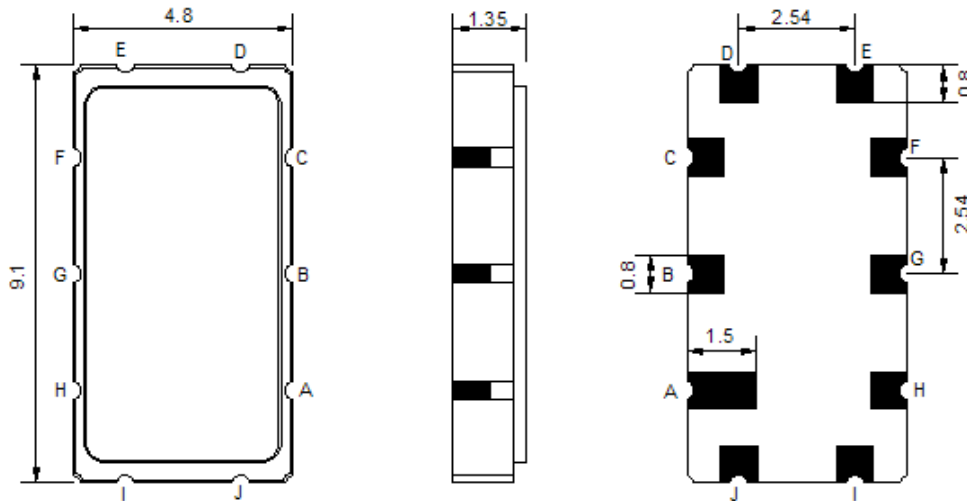
Parameters Description	Unit	Minimum	Typical	Maximum
Operating Temperature Range	°C	-20	-	70
Storage Temperature Range	°C	-40	-	85
Maximum DC Voltage	V	-	-	10
Maximum Input Power	dBm	-	-	10
Source Impedance (single ended) <sup>(1)</sup>	Ω	-	50	-
Load Impedance (single ended) <sup>(1)</sup>	Ω	-	50	-
Package type & size	T			
Length x Width	mm <sup>2</sup>	-	9.1 x 4.8	-
Height	mm	-	-	1.5

### Electrical Specification

Parameters Description	Unit	Minimum	Typical	Maximum
Center Frequency (Fo)	MHz	-	62.5	-
Insertion Loss at Fo	dB	-	15.8	18.0
Group Delay Variation (Fo±9.22MHz)	nsec	-	17	35
Absolute Delay at Fo	usec	-	0.66	-
Passband Ripple (Fo±9.22MHz)	dB	-	0.30	0.7
Bandwidth at -1dB	MHz	20.80	21.30	-
Bandwidth at -3dB	MHz	21.80	22.82	-
Bandwidth at -20dB	MHz	-	26.80	-
Bandwidth at -30dB	MHz	-	28.10	28.60
Bandwidth at -40dB	MHz	-	29.25	30.00
Ultimate Rejection	dB	-	40	-
Temperature coefficient	ppm/°C	-	-86	-

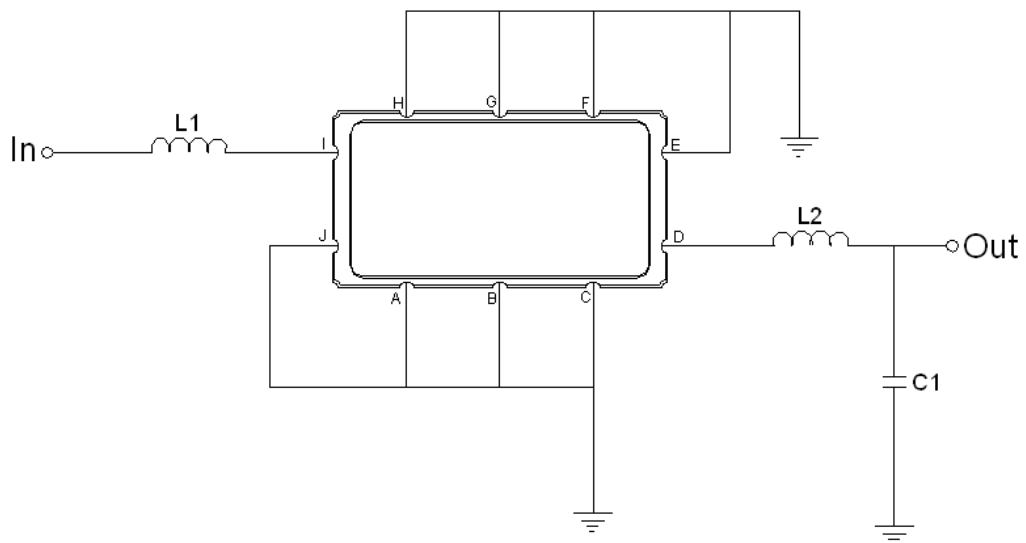
**Notes :** (1) With Matching Network (Ref. Testing Environment Circuit as shown below).  
Those impedances could be modified with different impedance values and/or structures, if necessary.

**Package Dimensions**



Pin Description	
A, B, C, E, F, G, H, J	Ground
I	Input
D	Output

**Testing Environment**

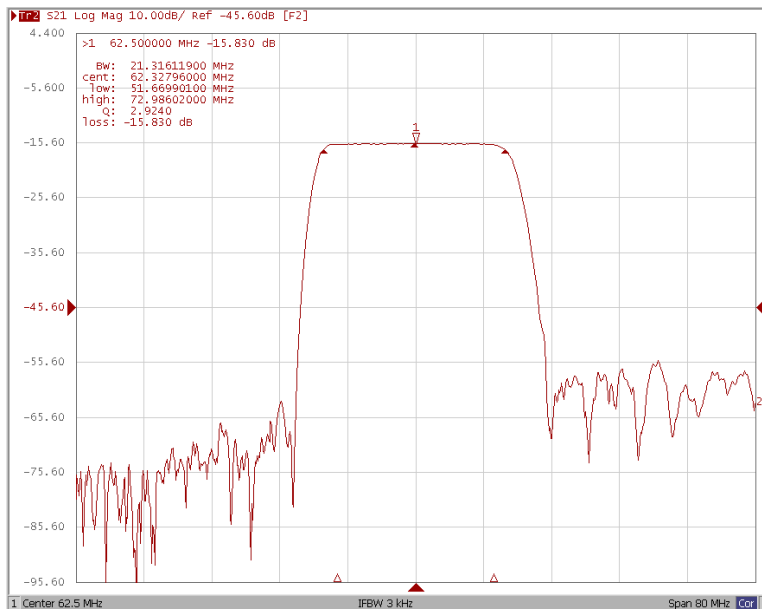


Test Fixture & Values	
Input	L1 = 180 nH
Output	L2 = 270 nH, C1 = 4 pF
Source/Load Impedance	50 Ω

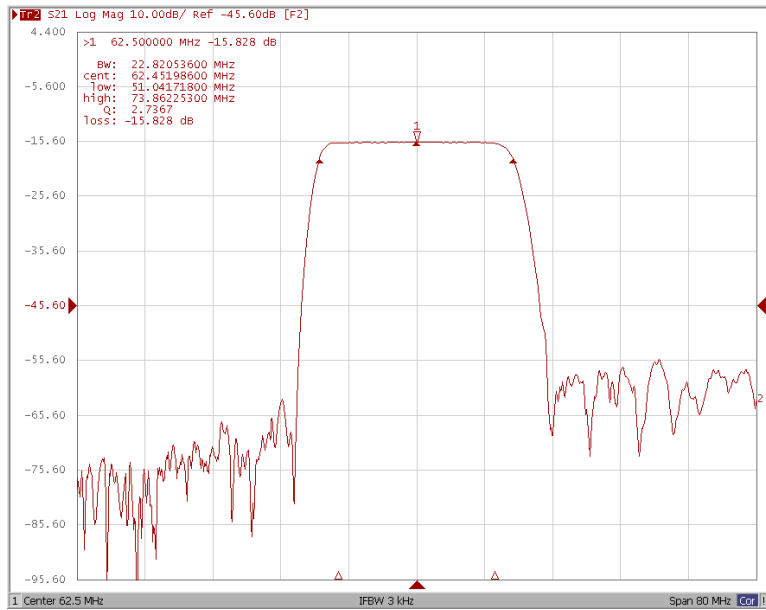
## Frequency Characteristics

### Frequency Response

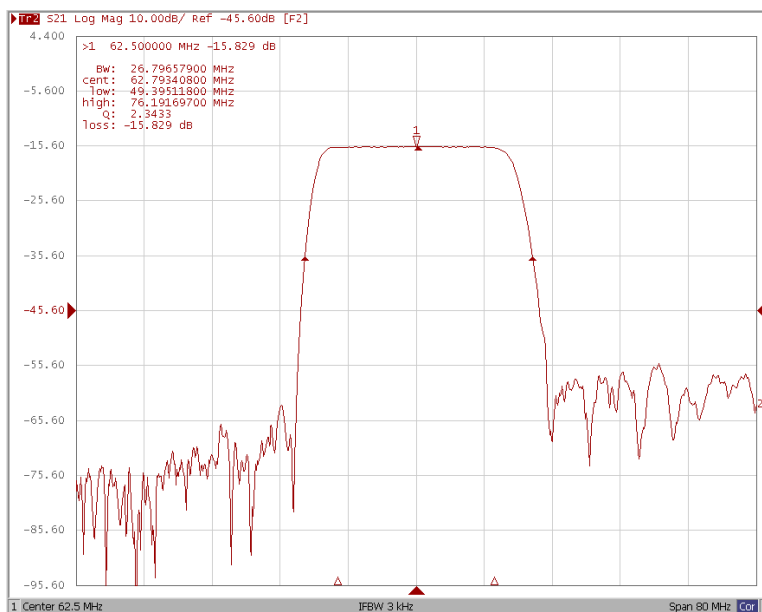
Bandwidth at -1.0 dB



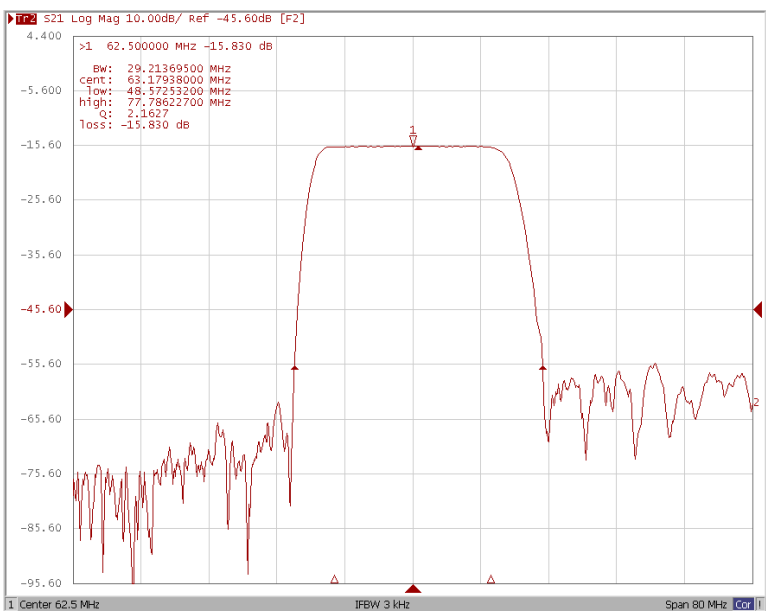
Bandwidth at -3.0 dB



Bandwidth at -20.0 dB



Bandwidth at -40.0 dB

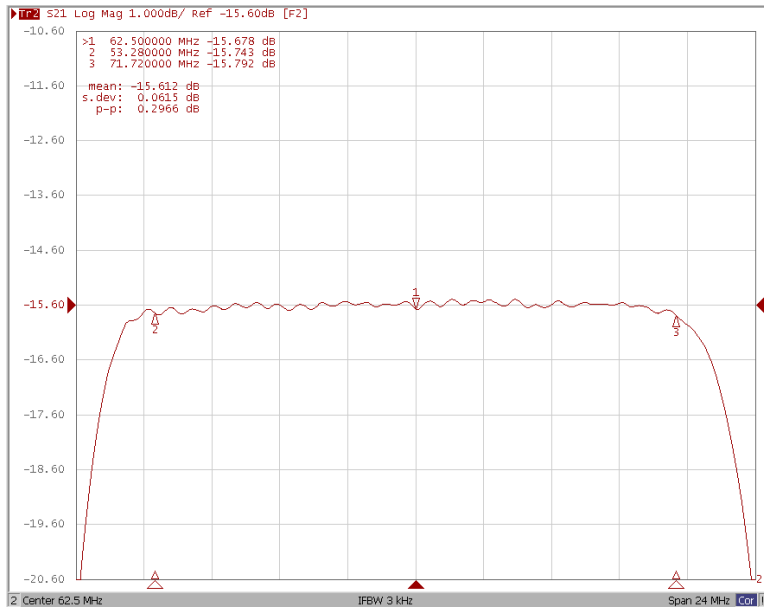




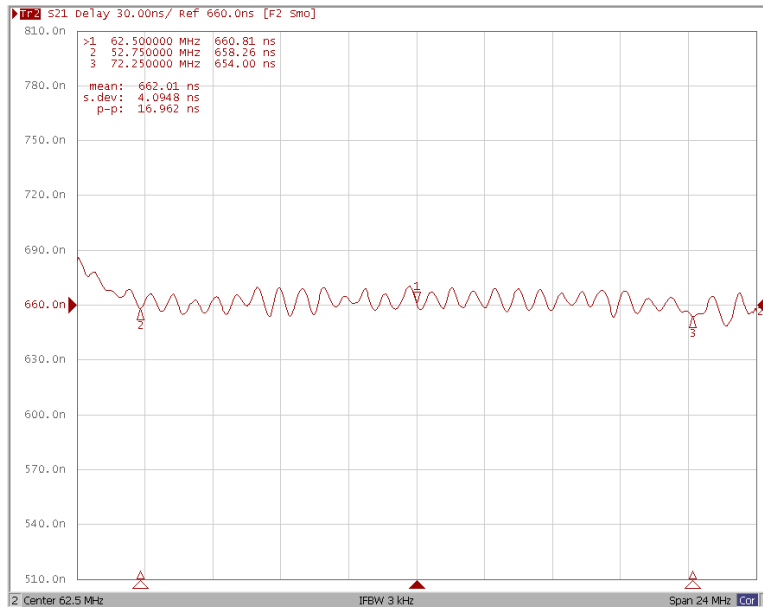
### Frequency Characteristics

#### Frequency Response

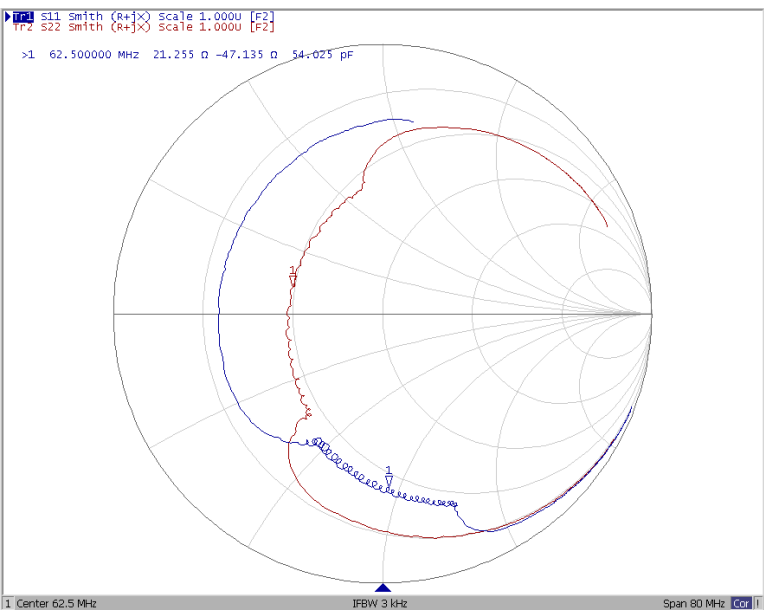
#### Ripple Variation at Fo ±9.22MHz



#### Group Delay Variation at Fo ±9.75MHz



#### Smith Chart



#### VSWR

